

**FIELD
ELECTRICAL
DISTRIBUTION**

MADE IN ITALY




For over 35 years we have been producing power boxes for the supply and transport of energy for the modular field systems of the Civil Protection, Red Cross and Armed Forces both on European ground and in international missions.

Our products allow the power supply of tent camps whether they consist of pneumatic tents, exoskeleton tents with poles or sheltered modules.

Our solutions range from the general camp electrical panel, to the outdoor tent, electrical distribution, indoor tent LED lighting, LED light towers for the perimeter of the tent camp, inflators for the pneumatic tents and driveway cable ducts.

We are an ISO 9001:2015 certified company, recognized, approved and NATO coded with the code A9402 NCAGE AK806, which demonstrates our ability to provide products suitable for military requirements, in fact our solutions are designed to withstand and give continuity of service in the most severe, essential and necessary conditions in case of all types of emergencies.

Being the manufacturers, we are able to design and supply the materials according to the specific technical requirements.



THE BASIC PRODUCT FOR THE CONSTRUCTION OF OUR PRODUCTS IS **HARD BUTYL RUBBER**.

THE ELASTICITY OF THE SPECIAL COMPOUND ADOPTED GUARANTEES MAXIMUM MECHANICAL RESISTANCE TO IMPACTS, TRACTION, CRUSHING AND INTENSIVE TREATMENT.

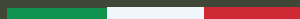
THE TEMPERATURE VARIATIONS WITH THE RELATIVE USE AT THE MOST VARIED TEMPERATURES (-40°C) DO NOT AFFECT ITS BASIC CHARACTERISTICS.

THE FINAL RESULT IS A PRODUCT WITH TOTAL ELECTRICAL INSULATION, SELF-EXTINGUISHING, WITH MAXIMUM RESISTANCE TO OILS, ACIDS, SALTS, GASOLINE AND SOLVENTS IN COMMON USE AS WELL AS EXCEPTIONAL RESISTANCE TO AGING AND UV RAYS.





MADE IN ITALY





SERIES PB

FLIGHT-CASE POWER BOXES

FIELD ELECTRIC DISTRIBUTION 400V
400A GENERAL CAMP PANEL



CHECK
IT ON 3D



\\ TECHNICAL SPECIFICATIONS

- Professional Flight-case easily transportable and storable.
- No. 4 pivoting wheels diameter 150 mm of which (2) are complete with brakes.
- Removable covers, front and back, used for the mechanical protection of electrical components during transport and storage.
- Switches placed under transparent polycarbonate window.
- Class of Isolation I.
- Dimensions when closed approx.: 520x1125x610 mm (LxHxD).

DATA & PERFORMANCE:

INLET:

- No. 5 Power Lock 400V 400A IP67 single-pole connectors..

OUTLETS:

- No. 8 Embedded sockets CEE P17 400V 63A 3P+N+E IP67 (Zone panel power supply).
- No. 1 Embedded socket CEE P17 230V 16A 2P+E IP67 (Service).

PROTECTIONS:

- Magnetothermal main switch.
- Outputs protected by residual current circuit breakers.

SIGNALING / INSTRUMENTATION:

- Multimeter for consumption reading.
- Emergency push button.
- No. 3 Network presence indicator lights.



SERIES PB

FLIGHT-CASE POWER BOXES

400V 63A FIELD ELECTRICAL DISTRIBUTION FOR TENT
POWER SUPPLY AND CAMP SERVICES



\\ TECHNICAL SPECIFICATIONS

- Professional portable flight-case, easily transportable and storable.
- No. 4 pivoting wheels diameter 150 mm 2 of which are complete with brakes.
- Removable cover, front and back, used for the mechanical protection of electrical components during transport and storage.
- Switches placed under transparent polycarbonate window.
- Class of Isolation II (double isolation).
- Dimensions when closed approx. 580x720x480 mm (LxHxD).

DATA & PERFORMANCE:

INLET:

- No. 1 Embedded plug CEE P17 400V 63A 3P+N+E IP67.

OUTLETS:

- No. 2 Embedded sockets CEE P17 400V 32A 3P+N+E IP67 (Air Conditioner power supply).
- No. 6 Embedded sockets CEE P17 230V 16A 2P+E IP67 (Tent power supply).
- No. 3 Embedded sockets Schuko 230V 16A 2P+E IP67 (Service).

PROTECTIONS:

- Magnetothermic main switch.
- Outputs protected by residual current circuit breakers.

SIGNALING / INSTRUMENTATION

- No. 3 Network presence indicator lights.



SERIES WE

PORTABLE INFLATORS

230V PORTABLE INFLATOR WITH
AUTOMATIC PRESSURE MAINTENANCE
SYSTEM FOR PNEUMATIC TENTS



CHECK
IT ON 3D



\\ TECHNICAL SPECIFICATIONS

- Self-extinguishing hard butyl rubber enclosure complete with carrying handle and reinforced support feet, the box is stackable for storage.
- Motherboard with microprocessor for controlling the pressure of the pneumatic tent.
- Pressure can be monitored from the digital display under the transparent polycarbonate window.
- Possibility of manual start.
- Class of Isolation II (double isolation).
- Dimensions of rubber enclosure: 260x340x260 mm (LxHxD).

DATA & PERFORMANCE:

- Power Supply: 7 mt of Neoprene cable and mobile plug CEE P17 230V 16A 2P + E IP67.
- Power: 1246W.
- Blowing Capacity: 45 liters/sec (to the fitting).
- Thermal protections for the microprocessor board, motor and motor overheat.
- Inlet and Outlet through of Camlock fittings type 1 "1/4" for inflating and deflating tents.
- Weight: 12 Kg approx.

OPERATION MODE:

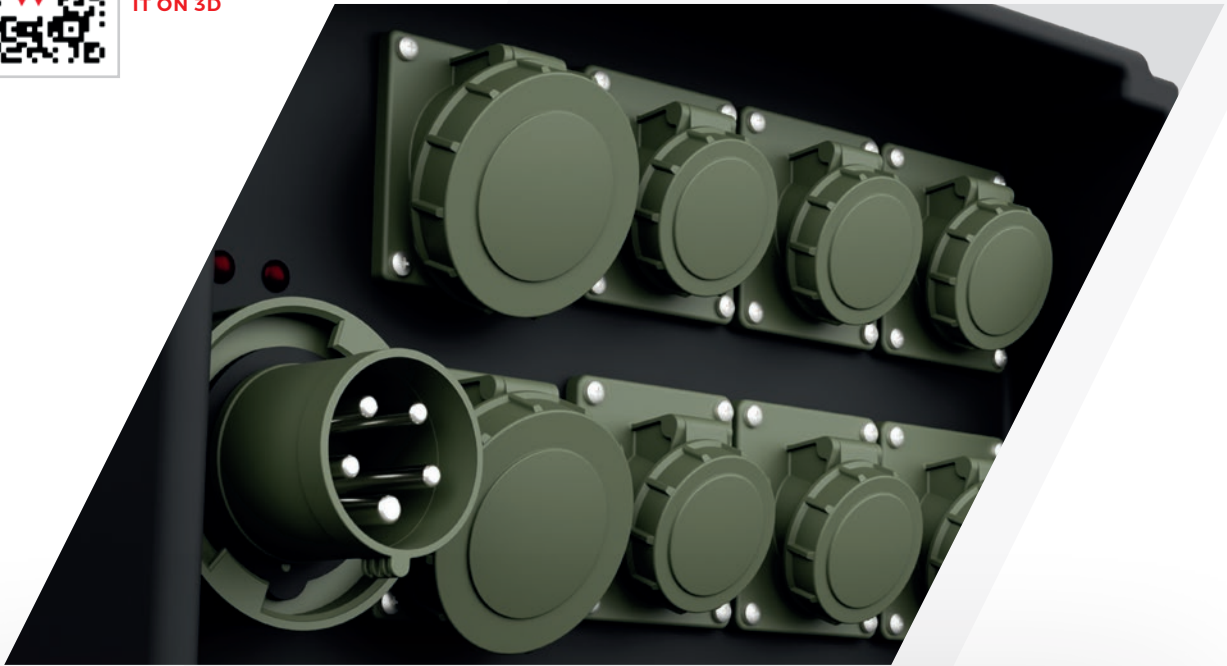
- Setting the switch to "auto" when the pressure drops below 0.16 bar activates the inflator, increasing the internal tent pressure to the set value.



SERIES 810

POLYETHYLENE POWER BOXES

FIELD ELECTRIC DISTRIBUTION 400V FOR EXTERNAL TENT



\\ TECHNICAL SPECIFICATIONS

- Stackable polyethylene enclosure complete with 2 side handles for transport and reinforced support feet.
- Class of Isolation II (double isolation).
- Polyethylene enclosure dimensions: 560x340x350 mm (LxHxD).

DATA & PERFORMANCE:

INLET:

- No. 1 Embedded plug CEE P17 400V 63A 3P+N+E IP67.

OUTLETS:

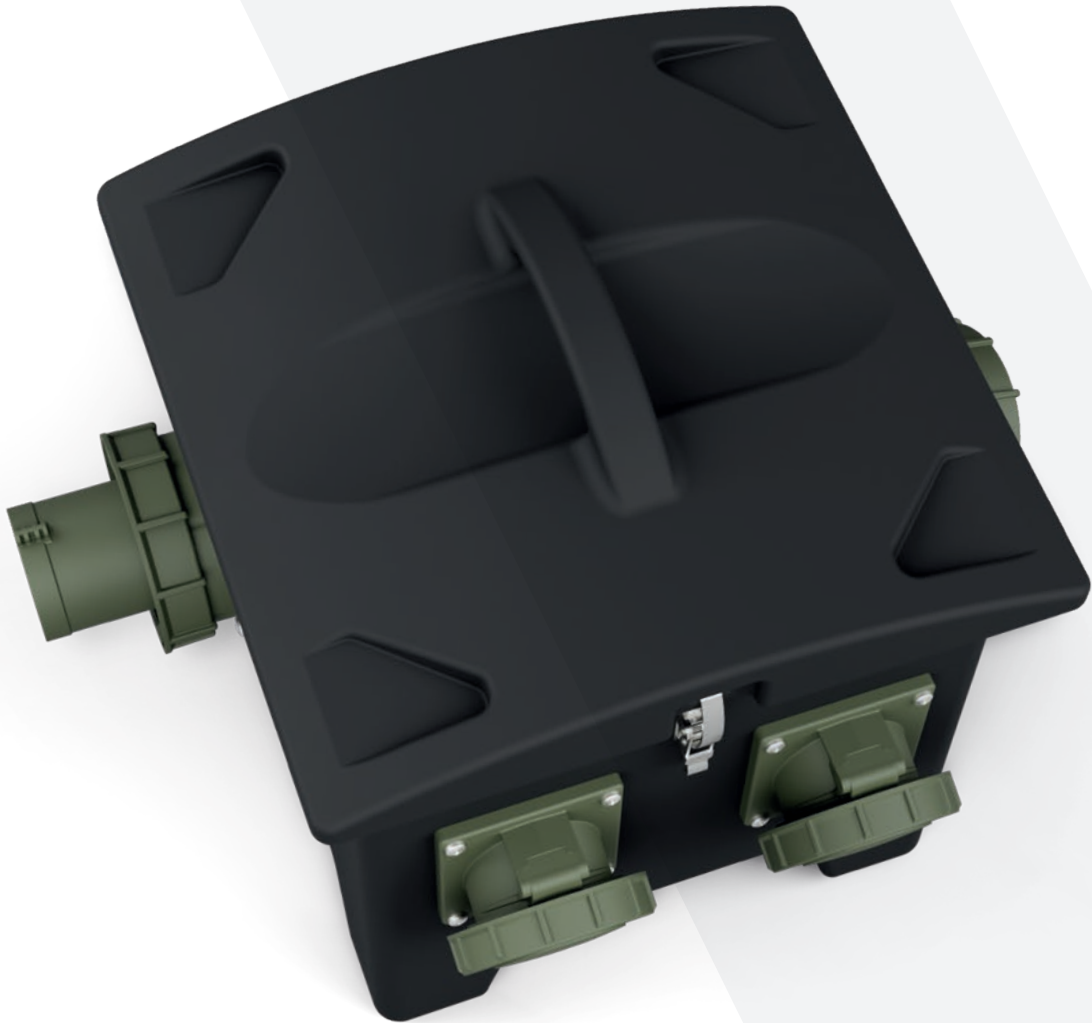
- No. 6 Embedded sockets CEE P17 230V 16A 2P+E IP67 (Tent power supply)
- No. 2 Embedded sockets CEE P17 400V 32A 3P+N+E IP67 (Service, Heaters and/or air conditioners).

PROTECTIONS:

- Magnetothermal mains switch.
- Outputs protected by residual current circuit breakers.

SIGNALING / INSTRUMENTATION:

- No. 3 Network presence indicator lights.



SERIES 490

POLYETHYLENE POWER BOXES

FIELD ELECTRIC DISTRIBUTION 400V FOR EXTERNAL TENT



\\ TECHNICAL SPECIFICATIONS

- Stackable polyethylene enclosure complete with 2 side handles for transport and reinforced support feet.
- Class of Isolation II (double isolation).
- Polyethylene enclosure dimensions: 370x400x370 mm (LxHxP).

DATA & PERFORMANCE:

INLET:

- No. 1 Embedded plug CEE P17 400V 63A 3P+N+E IP67.

OUTLETS:

- No. 3 Embedded sockets CEE P17 230V 16A 2P+E IP67 (Service, Lighting towers and/or portable inflators).
- No. 2 Embedded sockets CEE P17 400V 32A 3P+N+E IP67 (Service, Heaters and/or air conditioners).
- No. 1 Embedded socket CEE P17 400V 63A 3P+N+E IP67 (Unprotected pass-through power supply).

PROTECTIONS POSITIONED UNDER THE COVER:

- Magnetothermal mains switch.
- Outputs protected by residual current circuit breakers.

SIGNALING / INSTRUMENTATION:

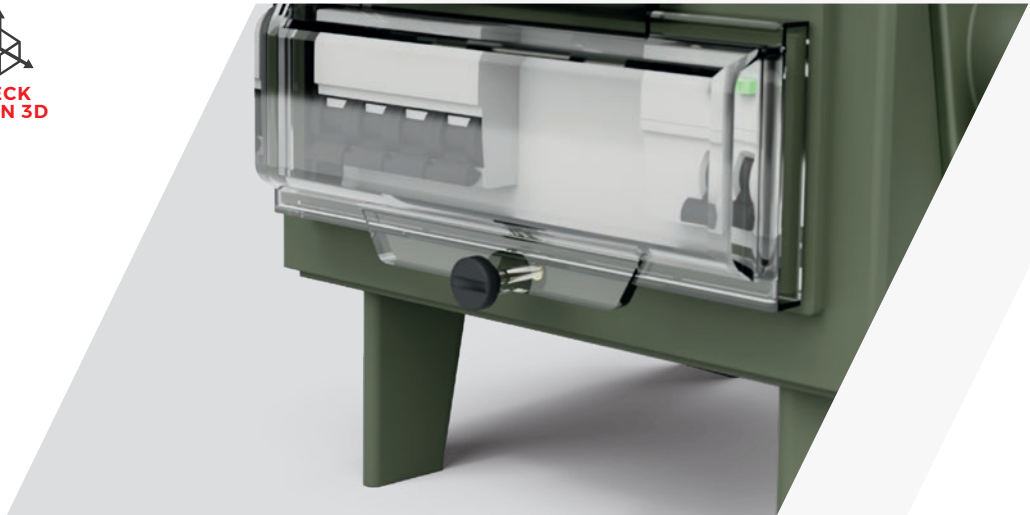
- No. 3 Network presence indicator lights.



SERIES 460

HARD BUTYL RUBBER POWER BOXES

230V ELECTRICAL DISTRIBUTION POWER BOXES FOR INDOOR TENT



\\ TECHNICAL SPECIFICATIONS

- Self-extinguishing hard butyl rubber enclosure complete with carrying handle and reinforced support feet.
- Transparent polycarbonate window to protect the switches, with stainless steel spring closure.
- Class of Isolation II (double isolation).
- Dimensions of rubber enclosure: 230x272x230 mm (LxHxD).

DATA & PERFORMANCE:

INLET:

- 3 mt of Neoprene cable and mobile plug CEE P17 230V 16A 2P+E IP67.

OUTLETS:

- No. 4 Embedded sockets CEE P17 230V 16A 2P+E IP67 (Lights and Services for inside tents).

PROTECTIONS:

- RCBO 16A - $I_{\Delta N} = 0.03A$.
- Switch disconnecter for lighting line.



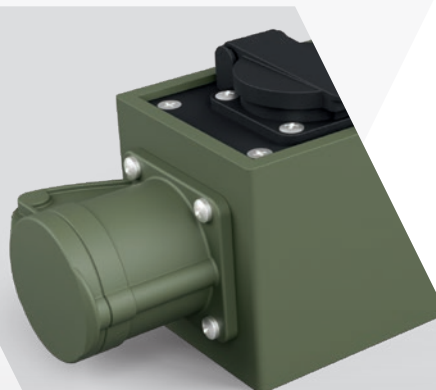
SERIES 430

HARD BUTYL RUBBER POWER BOXES

230V ELECTRICAL DISTRIBUTION POWER BOXES FOR INDOOR
TENTS SERVICES.



CHECK
IT ON 3D



\\ TECHNICAL SPECIFICATIONS

- Self-extinguishing hard butyl rubber enclosure.
- Class of Isolation I.
- Dimensions of rubber enclosure: 304x83x83 mm (LxHxD).
- External locking tooth.

DATA & PERFORMANCE:

INLET:

- No. 1 Embedded plug CEE P17 230V 16A 2P+E IP44.

OUTLETS:

- No. 1 Embedded socket CEE P17 230V 16A 2P+E IP44 (power line supply).
- No. 5 Embedded sockets Schuko 230V 16A 2P+E IP54.

SIGNALING / INSTRUMENTATION:

- No. 1 Network presence indicator light.



SERIES 440

HARD BUTYL RUBBER POWER BOXES

230V FINAL ELECTRICAL DISTRIBUTION POWER BOXES FOR INDOOR
TENT SERVICES



CHECK
IT ON 3D



\\ TECHNICAL SPECIFICATIONS

- Self-extinguishing hard butyl rubber enclosure.
- Class of Isolation II (double isolation).
- Dimensions of rubber enclosure: 430x73x115 mm (LxHxD).

DATA & PERFORMANCE:

INLET:

- 3 mt of Neoprene cable and mobile plug CEE P17 230V 16A 2P+E IP67.

OUTLETS:

- No. 5 Universal 230V 16A 2P+E panel sockets (Schuko and Italian bivalent).



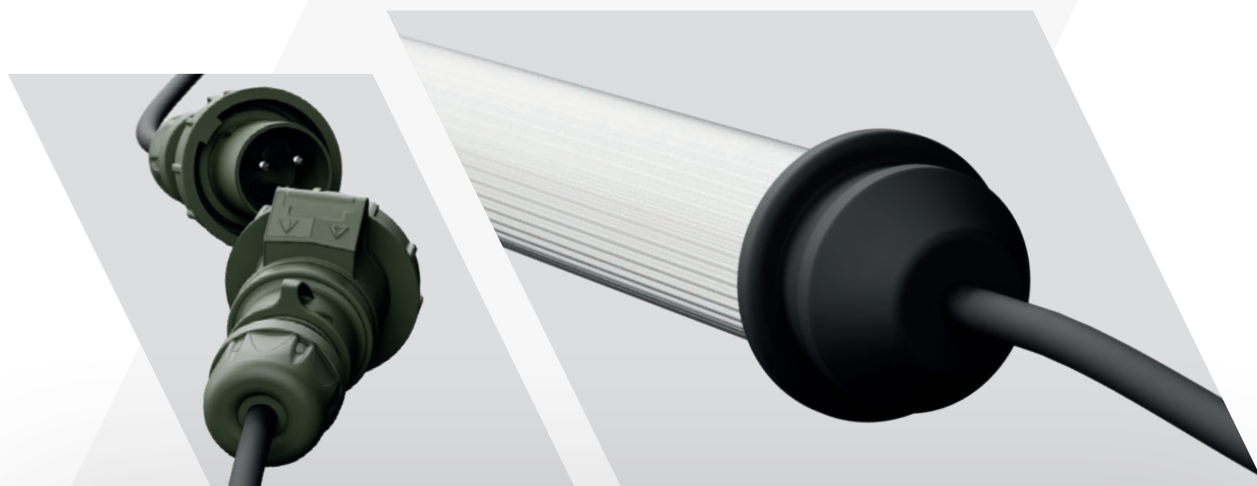
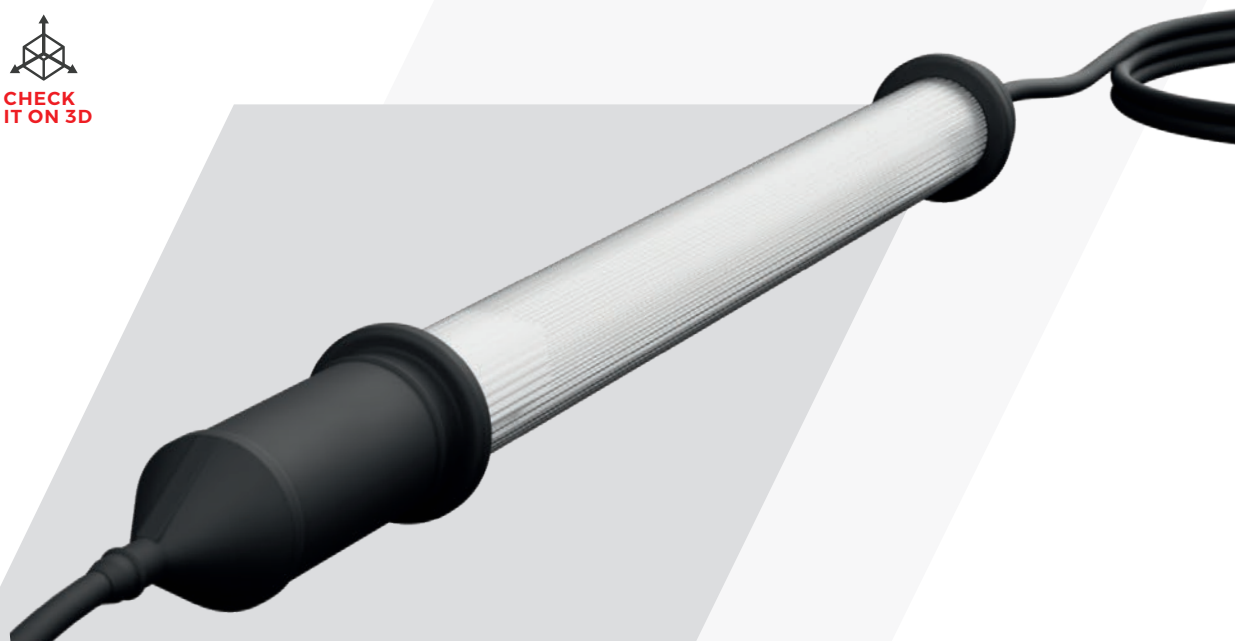
SERIES 12L

POLYCARBONATE TUBULAR LED LAMPS

LED LAMP THROUGHWIRED 230V FOR INDOOR TENT LIGHTING



CHECK
IT ON 3D



\\ TECHNICAL SPECIFICATIONS

- Outer protective tube in unbreakable polycarbonate that offers a very high mechanical resistance to impacts.
- Self-extinguishing hard butyl rubber handle and cap with bumper edge.
- Class of Isolation II (double isolation).

DATA & PERFORMANCE:

- Protective tube dimension: Ø 50 mm; thickness approx. 1.4 mm.
- Lamp designed for chain power supply.
- Power supply: 1.5 mt of Neoprene cable and mobile plug CEE P17 230V 16A 2P+E IP67.
- Power line continuation: 1.5 mt of Neoprene cable and mobile socket CEE P17 230V 16A 2P+E IP67.
- Power: 20W.
- Luminous Flux: 3000lm.



SERIES 145

POLYCARBONATE LED LAMPS

230V BLUE LIGHT LED LAMP FOR TENT NIGHT INDOOR LIGHTING



CHECK
IT ON 3D



\\ TECHNICAL SPECIFICATIONS

- Shell in transparent, unbreakable, self-extinguishing polycarbonate.
- Self-extinguishing unbreakable polycarbonate top cover with bumper edge.
- Suspension hook.
- Blue LED bulb E27 socket.
- ON-OFF switch mounted on the lamp body.

DATA & PERFORMANCE:

- Dimensions: h 215 mm; Ø max 125 mm.
- Power Supply: 10 mt of Neoprene cable and mobile plug CEE P17 230V 16A 2P+E IP67.

ITEM No. 12R-LED-JCV



SERIES 12R

EMERGENCY LED LAMPS

230V EMERGENCY LED LAMP FOR INDOOR TENT



\\ TECHNICAL SPECIFICATIONS

- Outer polycarbonate protection tube that offers a very high mechanical resistance to impacts.
- Self-extinguishing hard butyl rubber handle and cap with bumper edge.
- IP67 watertight connector for connection to the main electrical supply and for battery charging.
- Supplied with 1.5 mt extension of Neoprene cable, IP67 connector and 230V 16A 2P+E IP67 mobile plug.
- Class of Isolation II (double isolation).
- Dimensions approx: 397x70 mm.

DATA & PERFORMANCE:

- Protective tube size: Ø 50 mm; Thickness approx. 1.4 mm.
- Power Supply: 1.5 mt of Neoprene cable and mobile plug CEE P17 230V 16A 2P+E IP67.
- Built-in electronic circuit for the management of lights, functions and battery charging.
- Maintenance-free 1.6 Ah Ni-MH hermetic internal battery.
- No. 3 x 1W LEDs for main light, total luminous flux 321 lumen.
- No. 1 x 1W LEDs for secondary spotlight, luminous flux 107 lumen.

MODE OF OPERATION:

- Management of all lamp functions by means of an internal microprocessor.
- Battery autonomy at maximum power, over 2 hours.
- Charging time when the battery is completely discharged, about 9 hours.
- Automatic emergency function, which can be controlled through an ON-OFF switch.



SERIES VP

SINGLE-PHASE SPLITTERS

230V SPLITTER FOR INDOOR TENT SERVICES



\\ TECHNICAL SPECIFICATIONS

- Central body in polyurethane foam.
- Possibility of customizing the central body with company logo.

DATA & PERFORMANCE :

INLET:

- No. 1 Mobile plug CEE P17 230V 16A 2P+E IP67.

OUTLETS:

- No. 2 Mobile sockets CEE P17 230V 16A 2P+E IP67.



SERIES 80N

MOBILE POWER EXTENSION CABLES

400V & 230V MOBILE EXTENSION CABLES FOR INDOOR AND OUTDOOR TENT



CHECK
IT ON 3D



\\ TECHNICAL SPECIFICATIONS

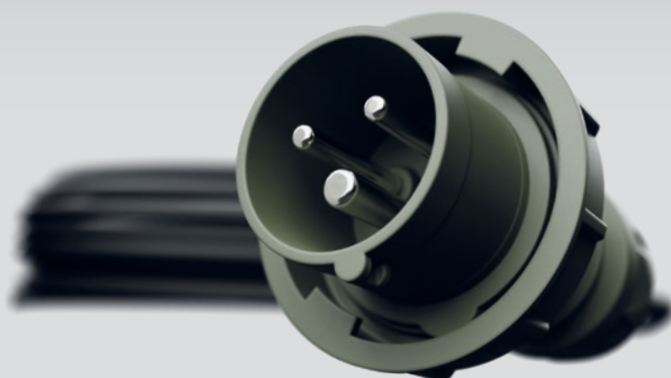
- Neoprene cable type H07RN-F.
- Flexible even at low temperatures.
- Resists crushing and abrasion.
- Industrial Plugs and Sockets type CEE P17.

PERFORMANCE:

- Working temperature: -30°C +90°C.

ITEMS NUMBER:

- **80N546SNV:** 5 mt Extension of Neoprene cable mobile plug and socket CEE P17 230V 16A 2P+E IP67.
- **80N146NSV:** 10 mt Extension of Neoprene cable mobile plug and socket CEE P17 230V 16A 2P+E IP67.
- **80N10SSC:** 10 mt Extension of Neoprene cable mobile plug and socket Schuko 230V 16A 2P+E IP67.
- **80N283SV:** 20 mt Extension of Neoprene cable mobile plug and socket CEE P17 400V 32A 3P+N+E IP67.
- **80N3D3SNV:** 20 mt Extension of Neoprene cable mobile plug and socket CEE P17 400V 63A 3P+N+E IP67.





WEST ELETTRIC S.R.L.

Via Sciola, 106
55054 QUIESA (LU) - ITALY
T +39 0584.97361
F +39 0584.975956
info@WestElettric.it

www.westelettric.com